

AQUA  
GALLERY

*Color Codex*



# AQUA GALLERY'S *Silk Color Codex*



SHELL  
6-9



SAND  
22-25



FLAME  
38-41



SMOKE  
54-57



CREAM  
10-13



ORANGE  
26-29



RED  
42-45



DARK  
58-61



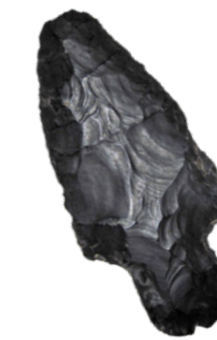
GOLD  
14-17



REDWOOD  
30-33



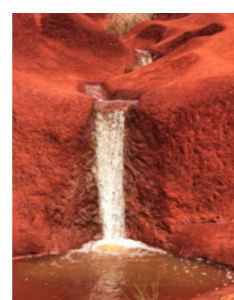
SILVER  
46-49



COAL  
62-65



CURRY  
18-21



RUST  
34-37



STONE  
50-53



GRASS  
66-69

# AQUA GALLERY'S

## *Silk Color Codex*



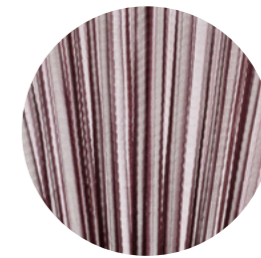
SHELL  
6-9



SAND  
22-25



FLAME  
38-41



SMOKE  
54-57



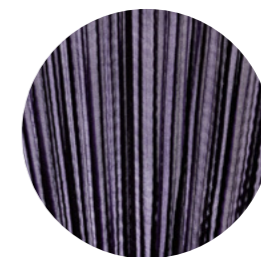
CREAM  
10-13



ORANGE  
26-29



RED  
42-45



DARK  
58-61



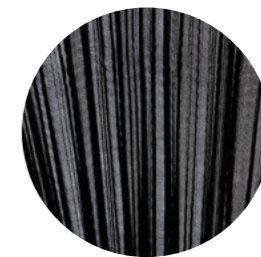
GOLD  
14-17



REDWOOD  
30-33



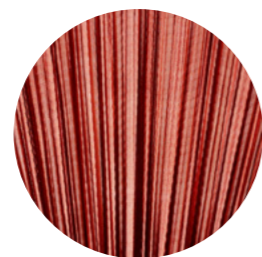
SILVER  
46-49



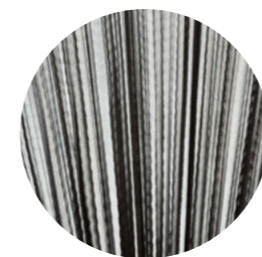
COAL  
62-65



CURRY  
18-21



RUST  
34-37



STONE  
50-53



GRASS  
66-69



# SHELL SILK

*An early morning  
beach walk. Dash of honey  
Soothing waves, rolling in.  
The feeling of freshly washed linen. Oxford stone.*

HEX #927762  
PANTONE 7504 C



Caloplaca Marina Lichen



*Inspiration*  
SHELL  
SILK



Tritia Mutabilis Shells



# CREAM SILK

*A nurturing feeling of warm comfort.  
Dried cotton flowers. Hushed chatter.  
Timeless beauty. Fine porcelain.*

HEX #BCB09F  
PANTONE 7529 C



*Inspiration*  
CREAM  
SILK

White Quartz



# GOLD SILK

*A vintage golden watch.  
The first sip from sparkling champagne. Freshly  
mown hay. A rising Tuscan sun.*

HEX #DCC58A  
PANTONE 467 C





*Inspiration*  
GOLD  
SILK

Gold nugget



# CURRY SILK

*Unrestrained laughter. Sipping on a cup of tea  
in bustling Bombay. Turmeric root powder. Freshly  
grated ginger.*

HEX #CFB040  
PANTONE 143 C



*Inspiration*  
CURRY  
SILK

Vincent van Gogh, Sunflowers,  
Arles, January 1889

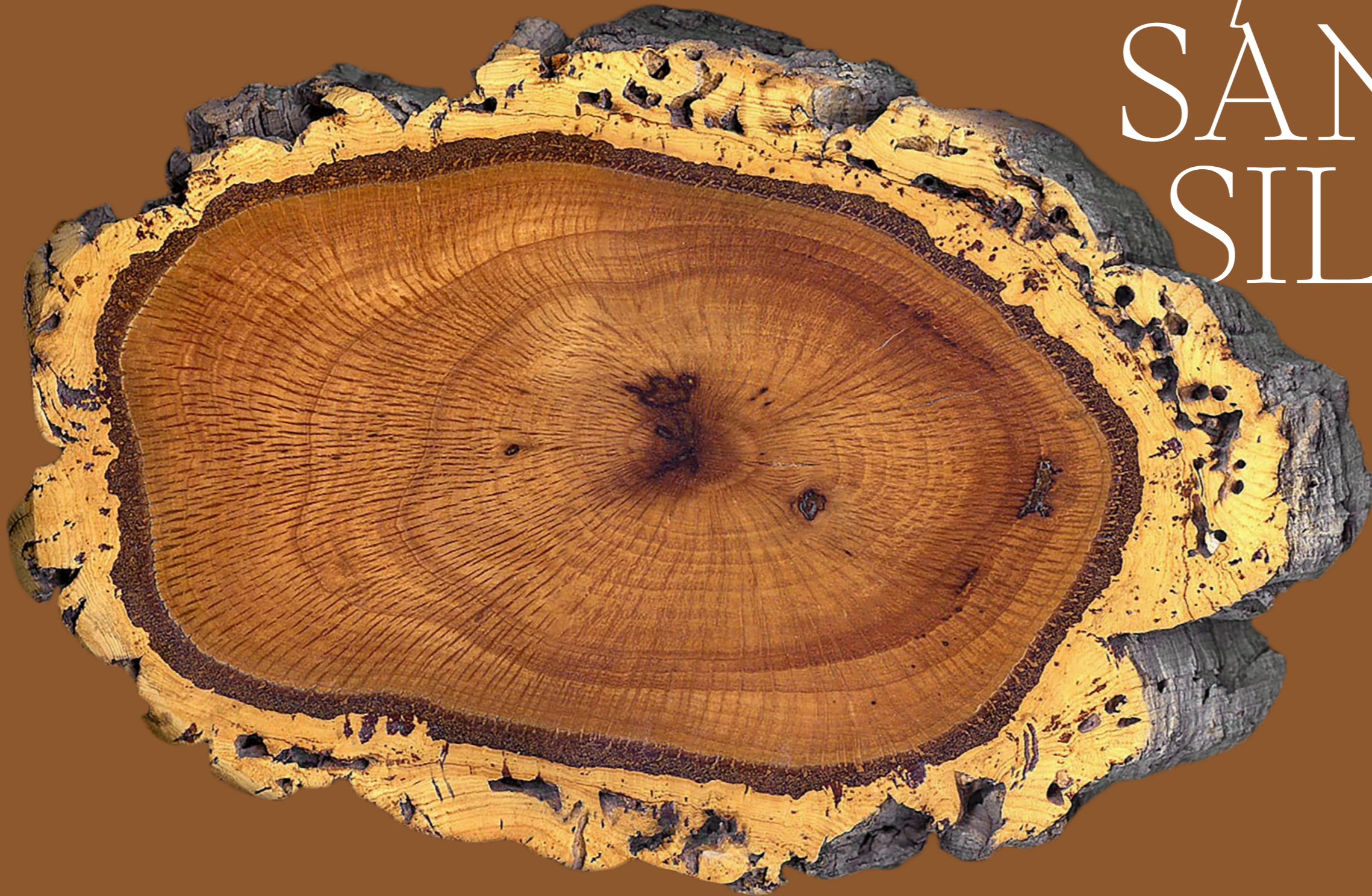


# SAND SILK

*Wavelike ridges on a beach. Fragrant  
cinnamon sticks. An empty cocoon. Sunkissed  
skin. Tanned leather.*

HEX #8D582E  
PANTONE 7567 C

*Inspiration*  
SAND  
SILK



Cork Oak cross-section



# ORANGE SILK

*Dawn on a sunny  
August morning. A grand Dutchess.  
Energetic. Amber stone.  
Powdered clay.*

HEX #A75716  
PANTONE 160 C



*Inspiration*  
ORANGE  
SILK

Aboriginal rock art



# REDWOOD SILK

*A smell of earthy undertones and a  
tinge of sweetness. No dread of time. An  
otherworldly tree. Majestic. Sacred.*

HEX #8B4734  
PANTONE 7581 C



*Inspiration*  
REDWOOD  
SILK



A 99.95% pure copper disc made by continuous casting, etched to reveal crystallites



# RUST SILK

*Feeling the last sunbeams on your face  
right before the sun sets. Victorian red.  
Warm-heartedness. Redolent of claystone walls in  
Marrakech. Flamboyance.*

HEX #A52D19  
PANTONE 7599 C



*Inspiration*  
RUST  
SILK

The Red Dirt Waterfall, Waimea Canyon,  
Kauai, Hawaii



# FLAME SILK

*Enjoying a midsummer bonfire out in nature.  
An iconic red lipstick. Blushing. An inviting  
warmth. Totemic. Strength.*

HEX #B83131  
PANTONE 180 C



*Inspiration*  
FLAME  
SILK

Red Emperor Tulip



# RED SILK

*The strong yet delicate flower bursting through  
concrete. Full-bodied Merlot.  
Burgundy. Soft velvet curtains at the  
theater. Fresh bouquet of roses.*

HEX #972546  
PANTONE 7420 C



*Inspiration*  
RED  
SILK

Patiria Miniata



# SILVER SILK

*A freshness that awakens your senses. Polished  
silverware. A misty morning. Crisp air.  
A luminous glow.*



HEX #837E84  
PANTONE COOL GRAY 8 C





*Inspiration*  
SILVER  
SILK

The Far Side of Earth's Moon



# STONE SILK

*Balancing pebble stones. An unpaved road. Concrete jungle. A cup of strong Earl Grey tea. Delicate ash. A gloomy cave.*

HEX #494E52  
PANTONE 7540 C

*Inspiration*  
STONE  
SILK



Lead nugget



Shale rock



# SMOKE SILK

*A calm mood. Unpolished pink marble stone.  
Blossoming flowers. Optimism.*

HEX #6D5865  
PANTONE 5135 C



*Inspiration*  
SMOKE  
SILK

Grape Agate Geode



# DARK SILK

*Walking quietly on a moonless night. Delicately  
dark. Intuition. Soft shadows. Plum.*

HEX #452E4B  
PANTONE 669 C

The image features a vibrant, multi-colored view of the Messier 81 galaxy, also known as the Bode Galaxy. The galaxy's central core is a bright, glowing orange-yellow sphere. From this core, several distinct spiral arms emerge, each densely packed with stars. The stars in these arms exhibit a variety of colors, including deep blues, purples, and pinks, set against a dark, star-studded background. The overall appearance is that of a rich, multi-colored stellar population.

*Inspiration*  
DARK  
SILK

Messier 81 Galaxy



# COAL SILK

*A night walk on a warm summer  
night. Bricks inside a chimney. Iconic. A warm  
black. Smokey eyes.*

HEX #242326  
PANTONE NEUTRAL BLACK C



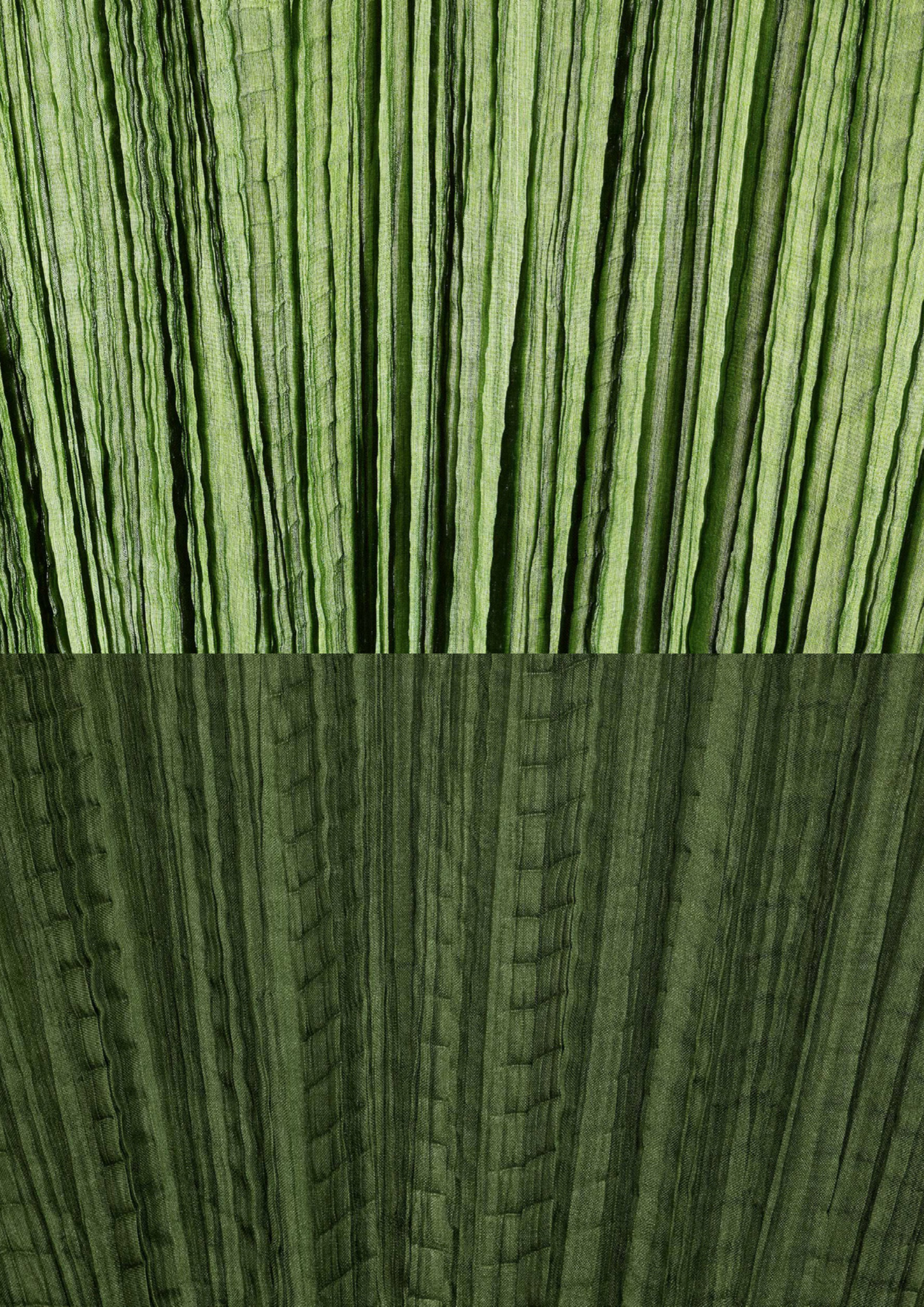
*Inspiration*  
COAL  
MILK



Sarcophagus of Harkhebit,  
Metropolitan Museum of Art



Adena type flint arrowhead



# GRASS SILK

*Dense moss on a brick wall. Whispering woods.  
Emerald stone. Dewy grass on an early  
summer morning.*

HEX #516232  
PANTONE 371 C

A detailed microscopic image of the leaf cell structure of Bryum Capillare. The image shows a dense network of cells with thick, wavy cell walls. Each cell contains a prominent, rounded chloroplast with a distinct internal structure. The overall appearance is a complex, interconnected grid of green cells.

*Inspiration*  
GRASS  
STICK

Bryum Capillare leaf cell structure

AQUAGALLERY.COM  
IG @AQUA\_CREATIONS  
INFO@AQUAGALLERY.COM

